



growers' advice

Fight against Blight

ISSUE 1: POTATO OUTGRADE HYGIENE



Blight control does not start in the crop. It starts much earlier.

Don't let your outgrade piles get to this state.

Left uncontrolled, outgrade piles act as a reservoir for blight infection.

An outgrade pile can be as small as a few discarded tubers in your yard.



Blight – the facts

- Blight is one of the most catastrophic diseases for all potato growers
- Blight risk increases enormously for crops close to uncontrolled outgrade piles
- Severe foliar blight alone can account for up to 40% yield loss
- Annual losses from blight cost GB growers up to £3 million
- The £20 million spent on blight sprays can be jeopardised by lack of attention and a failure to tackle outgrade piles

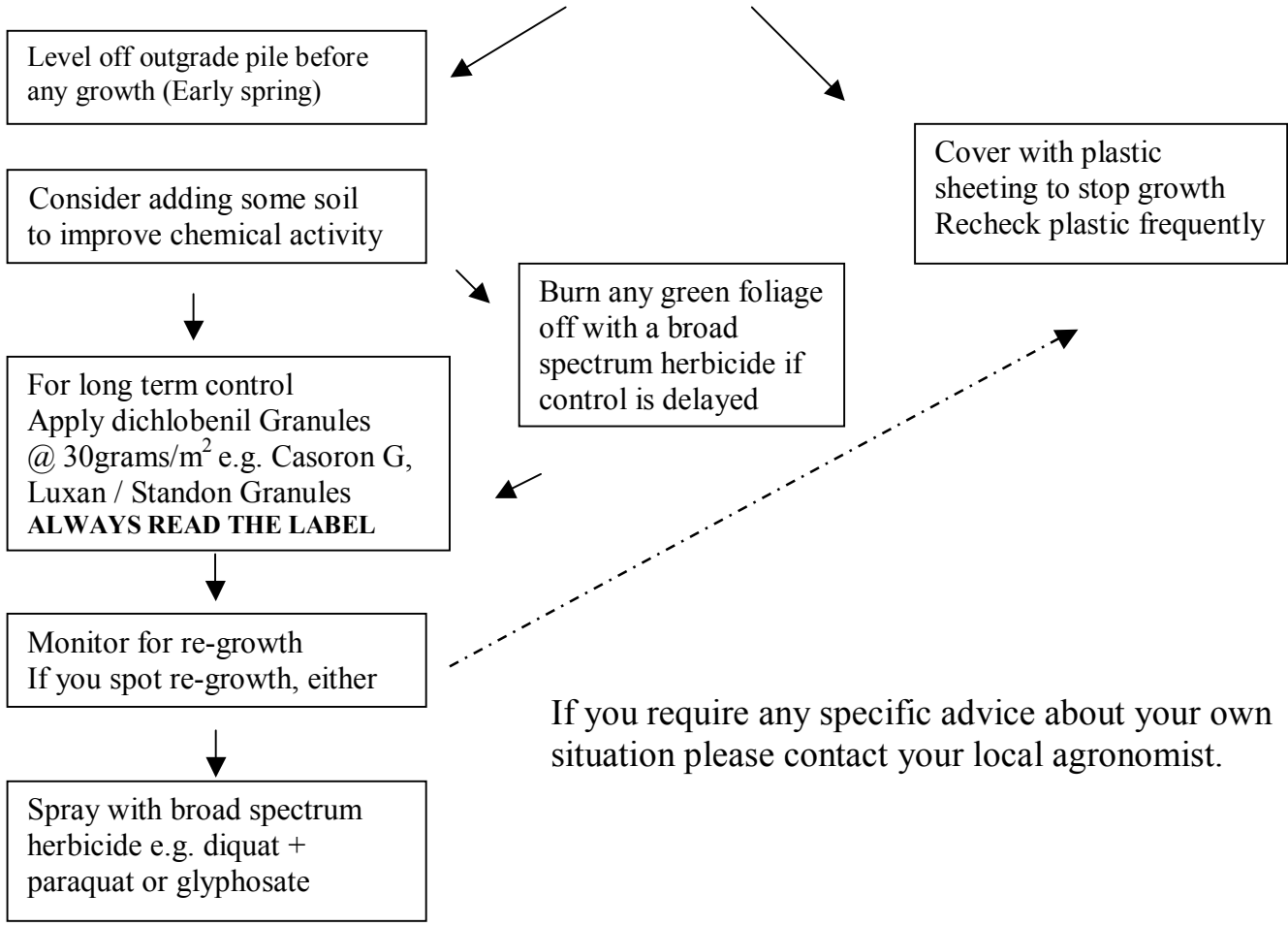
Potato outgrade control - best practice advice

All potato farms create potato outgrades. Following some simple steps will minimise its impact on your crops.

- Outgrade piles should be accessible but well away from you and your neighbours' next potato crops and farm buildings
- Try to site piles on land not intended for any crop or any potato crop in the future
- Don't risk polluting watercourses. Locate piles away from ditches, rivers, groundwater etc.
- Left uncontrolled, outgrade piles act as a reservoir for blight infection – even small ones
- Infected plants produce millions of airborne spores which can travel for miles
- Check with your neighbours, are they controlling their outgrade piles?
- Gardens and allotments can represent a risk
- Keep checking outgrade piles throughout the season for re-growth
- Follow the control measures set out overleaf

Adopt a zero tolerance approach to green foliage on outgrade piles by tackling it early. Relying on a late application of glyphosate or diquat + paraquat is a high risk strategy as blight may already have spread by this point.

Prevention of green foliage



Visit the BPC's Fight against Blight Centre at www.potato.org.uk/blight

Agricultural waste management regulations are in place in Scotland and are imminent elsewhere in Great Britain. They are being brought in to comply with the EU Waste Framework and Landfill directives. Agriculturally produced waste becomes "controlled waste". The law has changed in Scotland, with clear guidance to be set out in the new version of the PEPFAA Code. The law in England & Wales is likely to change in 2005 and will severely restrict on-farm disposal of all wastes without prior agreement from the Environment Agency. It is possible that this will have some effect on the disposal of crop wastes and the use of "potato dumps". Careful consideration should be given to these changes when planning your control options.

For more information on how this may affect you please see:

<i>England & Wales</i>	Defra:	www.defra.gov.uk/corporate/consult/agwaste-regs/index.htm
	Environment Agency:	www.environment-agency.gov.uk
<i>Scotland</i>	PEPFAA Code:	www.scotland.gov.uk/library5/environment/pepfaa-00.asp
	(SEERAD)	
	SEPA:	www.sepa.org.uk