



Production and price trends 1960 - 2008

August 2009 edition

Contents

Table 1	Areas, Production and Prices 1960-2008
Figure 1	Registered Area of Potatoes in GB 1960-2008
Figure 2	Total Production of Potatoes in GB 1960-2008
Figure 3	Grower Numbers and Revenue per Grower 1960-2008
Figure 4	Indexed Comparison of Trends 1970-2008
Figure 5	Production and Price 1995-2008
Figure 6	Forecasting Price from Production
Figure 7	Price versus Change in Planted Area
Figure 8	Free Market Weekly Average Price Index 2000-2008

The Potato Council's historical datasheet of areas, production and prices is more than a simple curiosity. It provides useful strategic information for long-term investment, and assists in understanding the dynamics of production, areas and prices in ways that may importantly affect your business decisions for the next season.

Prepared by Potato Council Market Information & Statistics

Additional copies can be downloaded in PDF format from <http://www.potato.org.uk>

For further information contact Denis Alder on +44 1865 766 646

Copyright (c) Agriculture & Horticulture Development Board, 2009.

Table 1 : Areas, production and prices 1960-2009

Year	Registered growers	Registered area, '000 ha	Total area*, '000 ha	Area per grower, ha	Maincrop Net Yield tons/ha	Total production, '000s tons	Average price ware £/ton	Retail Price Index	Avg £/ton 2007 Es	Gross revenue £ per Grower
1960	76825	280.2	290.2	3.65	22.6	6,558				
1961	74933	239.6	245.8	3.20	23.3	5,728				
1962	70056	253.0	258.9	3.61	23.6	6,109				
1963	66380	264.4	268.9	3.98	22.4	6,024				
1964	60940	270.0	276.0	4.43	23.6	6,514				
1965	57725	262.7	266.6	4.55	26.5	7,065				
1966	54700	237.1	240.3	4.33	25.4	6,104				
1967	50310	248.1	253.8	4.93	26.3	6,674				
1968	48239	246.2	247.2	5.10	25.9	6,402				
1969	45130	217.2	219.6	4.81	26.5	5,820				
1970	43346	238.6	239.1	5.51	29.6	7,076	14.27	19	166.94	27,252
1971	42756	225.7	228.0	5.28	30.8	7,021	14.82	20	158.48	26,024
1972	40756	208.5	211.4	5.11	29.4	6,214	19.08	22	190.51	29,046
1973	38753	196.0	200.5	5.06	32.5	6,517	18.76	24	171.53	28,846
1974	36872	189.4	192.5	5.14	33.6	6,469	25.40	28	200.21	35,126
1975	35478	180.2	182.4	5.08	23.5	4,287	103.95	34	659.71	79,716
1976	34938	194.9	196.8	5.58	22.5	4,429	133.46	40	727.03	92,164
1977	35286	199.4	202.3	5.65	30.2	6,108	43.19	46	203.18	35,170
1978	33387	183.9	188.5	5.51	36.7	6,917	43.99	50	191.08	39,588
1979	32149	171.4	178.2	5.33	34.1	6,075	58.82	57	225.31	42,575
1980	30225	174.0	179.7	5.76	36.9	6,631	44.43	67	144.23	31,642
1981	28760	162.4	167.9	5.65	34.5	5,794	83.51	75	242.26	48,805
1982	27498	161.3	168.1	5.86	38.9	6,539	53.40	81	142.64	33,920
1983	26499	165.2	170.8	6.23	32.3	5,517	125.75	85	321.13	66,859
1984	25480	167.4	173.3	6.57	40.2	6,965	49.26	89	119.81	32,750
1985	24948	162.7	167.1	6.52	39.3	6,567	57.02	95	130.71	34,406
1986	22565	150.1	155.3	6.65	39.2	6,087	86.52	98	191.81	51,741
1987	21439	151.1	154.3	7.05	41.2	6,358	71.85	102	152.87	45,334
1988	20155	155.1	157.7	7.69	41.8	6,590	62.55	107	126.86	41,477
1989	19266	151.8	154.3	7.88	38.7	5,973	99.09	115	186.48	57,815
1990	18331	154.1	156.5	8.40	39.6	6,198	78.20	126	134.45	45,459
1991	17234	154.4	156.7	8.96	38.5	6,032	85.70	134	139.17	48,712
1992	16512	155.0	157.5	9.39	47.5	7,481	56.69	139	88.74	40,205
1993	16308	148.2	151.0	9.08	45.1	6,808	79.52	141	122.53	51,152
1994	14900	141.0	144.2	9.46	43.4	6,263	156.86	144	236.00	99,196
1995	14022	146.3	149.6	10.44	40.9	6,120	137.12	149	199.38	87,016
1996	13395	147.1	156.1	10.98	44.5	6,941	66.46	153	94.36	48,891
1997	9772	137.1	146.4	14.03	46.8	6,853	76.29	158	105.01	73,645
1998	7530	134.6	142.8	17.88	43.2	6,171	147.16	163	195.85	160,510
1999	7331	145.5	155.6	19.85	44.0	6,843	67.35	165	88.28	82,403
2000	6143	133.9	146.2	21.80	41.0	5,993	122.00	170	155.31	151,521
2001	5606	131.6	146.4	23.47	43.8	6,410	111.06	173	138.93	158,857
2002	4804	128.4	138.7	26.73	48.2	6,683	69.30	176	85.27	118,616
2003	3376	115.0	124.8	34.06	46.6	5,812	128.32	181	153.45	264,172
2004	3247	119.1	130.9	36.68	45.9	6,009	94.57	187	109.81	203,223
2005	3064	116.6	125.9	38.07	46.1	5,805	107.69	192	121.60	230,377
2006	2920	119.6	127.2	40.95	43.4	5,528	134.17	198	146.84	277,996
2007	2871	124.2	130.8	43.26	41.4	5,409	142.71	207	149.76	282,142
2008	2721	123.9	130.2	45.53	45.1	5,946	124.92	217	124.92	272,978
2009	2582	123.9	130.3	47.99	45.1	5,950				

Gray text indicates estimated or provisional figures

Figure 1 : Registered Area of Potatoes in GB 1960-2009

Total area has declined by over 50%, but area per grower has increased dramatically from 5 ha to over 40 ha, reflecting greater consolidation and capitalization.

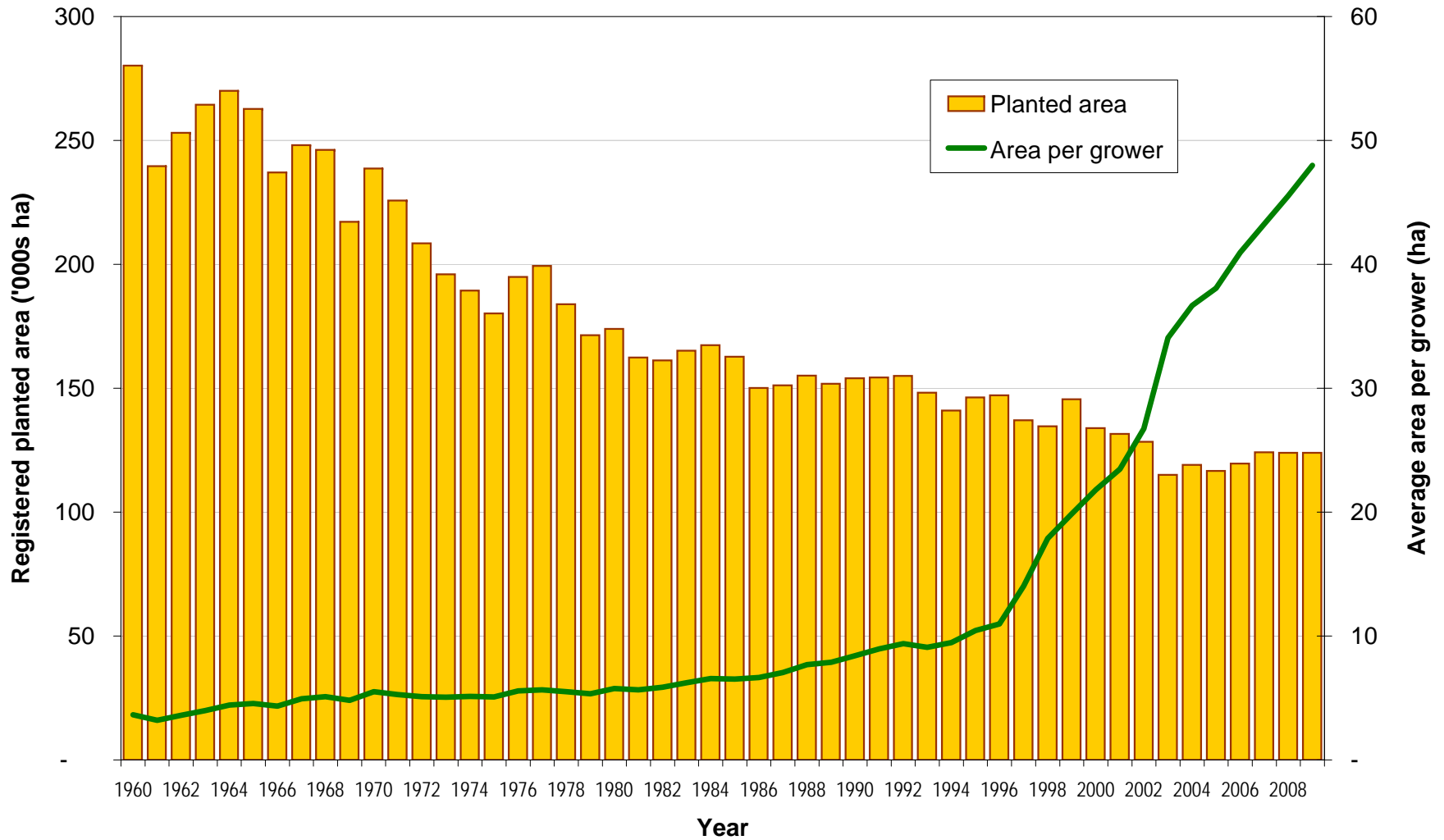


Figure 2 : Total production of Potatoes in GB 1960-2009

Production has been relatively constant since 1960, fluctuating around 6 million tonnes, though since 2002 it has shown some decline. Yields have shown a linear increase over the same period, allowing this production to be achieved off a smaller area (Fig 1). Fluctuations are mainly due to seasonal weather conditions.

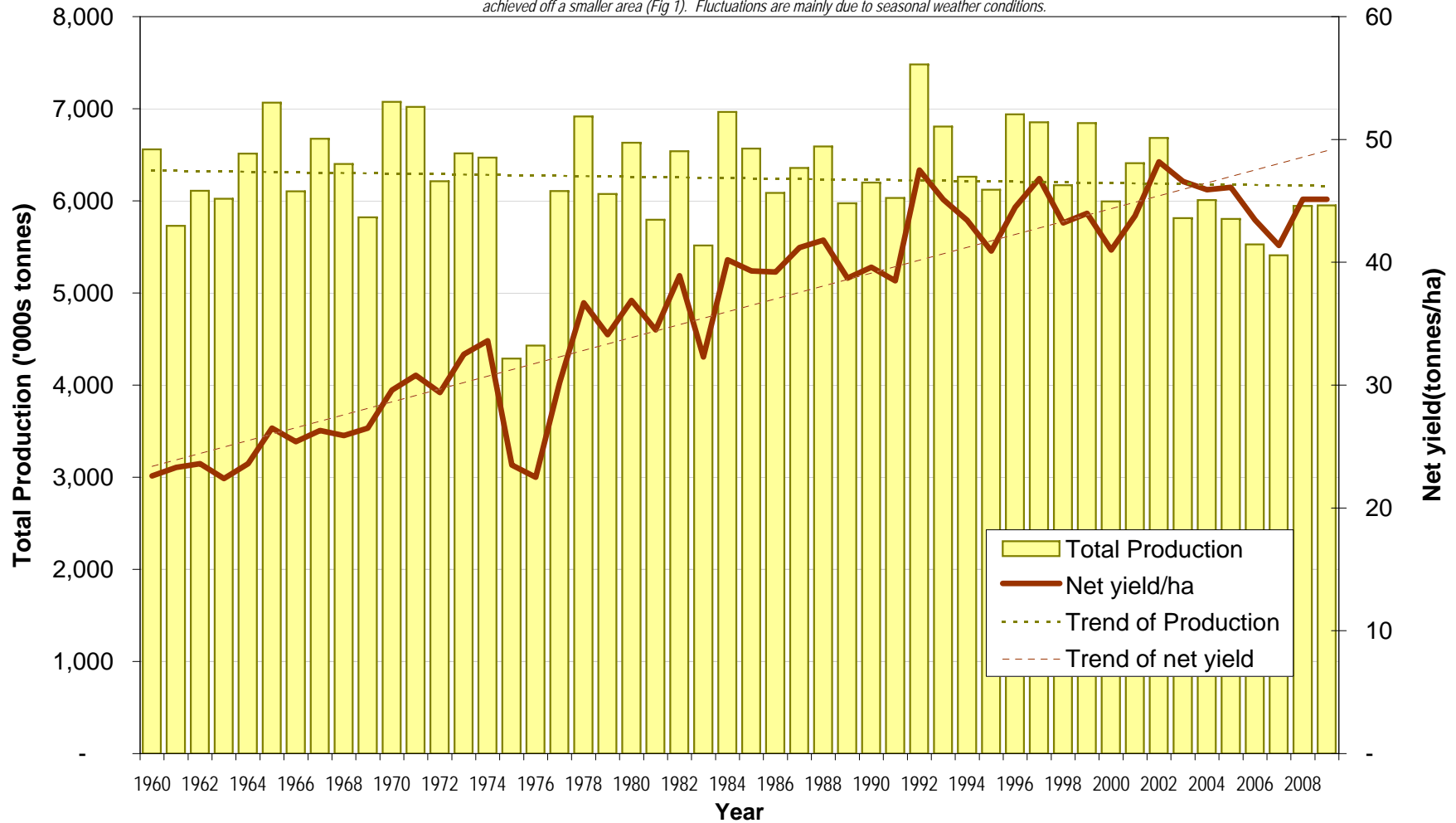


Figure 3 : Grower numbers and gross turnover 1960-2008

Grower numbers have declined drastically since 1960. Turnover per grower remained stable until de-regulation in 1996. Since then it has increased dramatically.

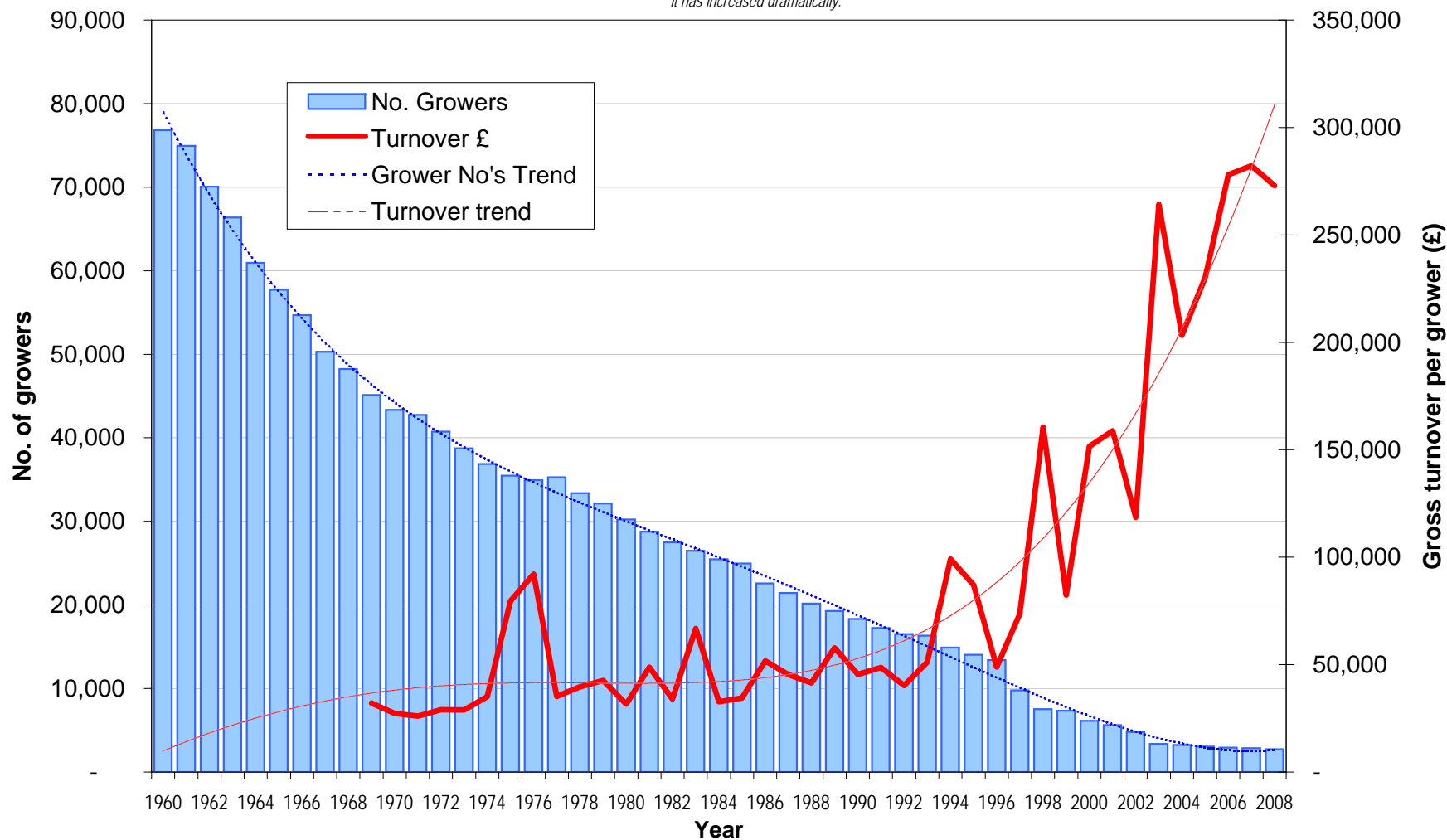


Figure 4 : Indexed comparison of trends 1970-2008

By indexing values relative to 1970, several trends can be compared on one chart on the same scale.

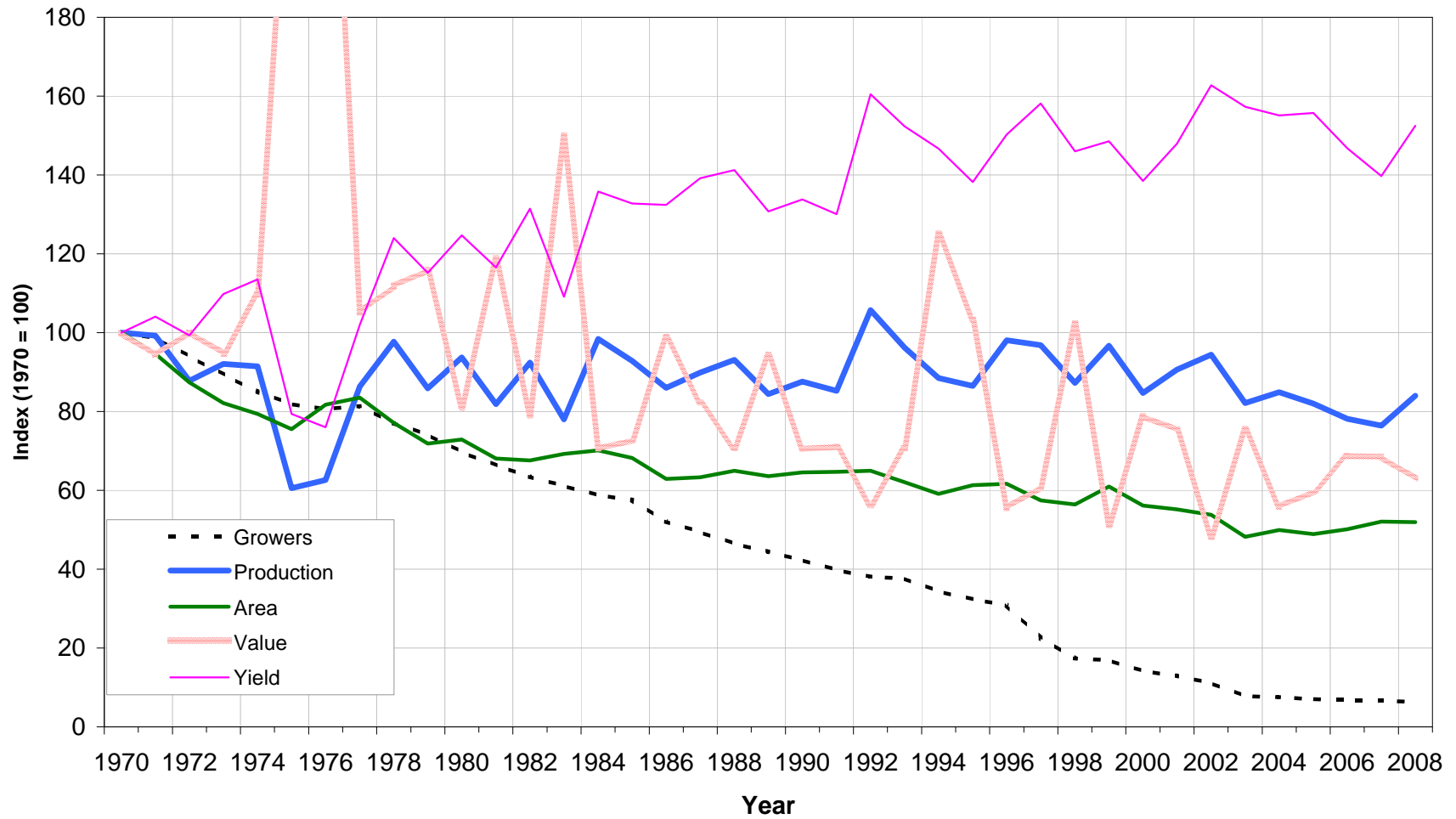


Figure 5 : Production and Price 1995-2008

Price tends to drop when production increases. Low price years occur when production exceeds six million tonnes. Prices shown are adjusted for inflation.

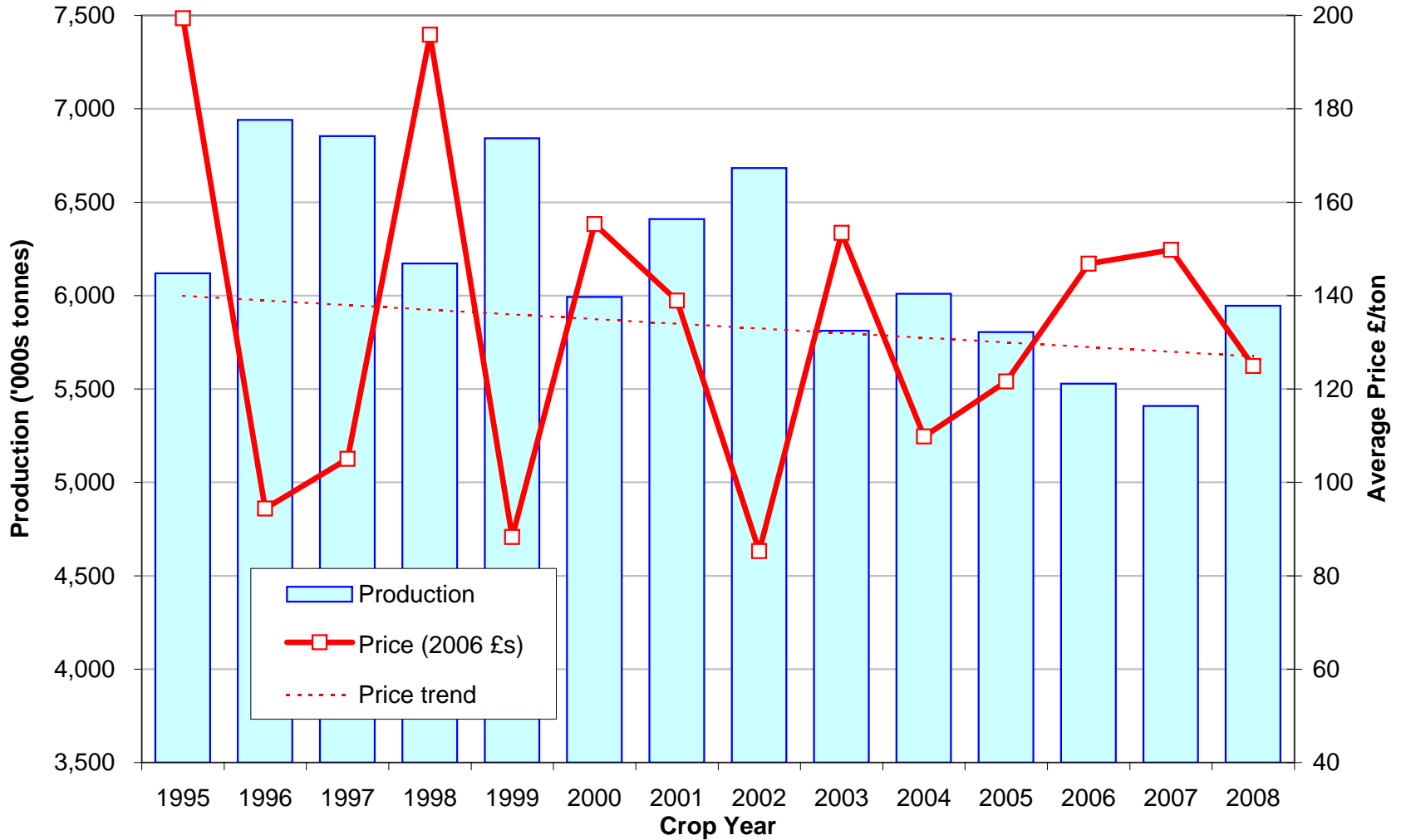


Figure 6 : Forecasting price from production

Changes in production from the previous year show a close correlation with changes in price. By applying this principle, the November production estimate is reasonably predictive of seasonal average price.

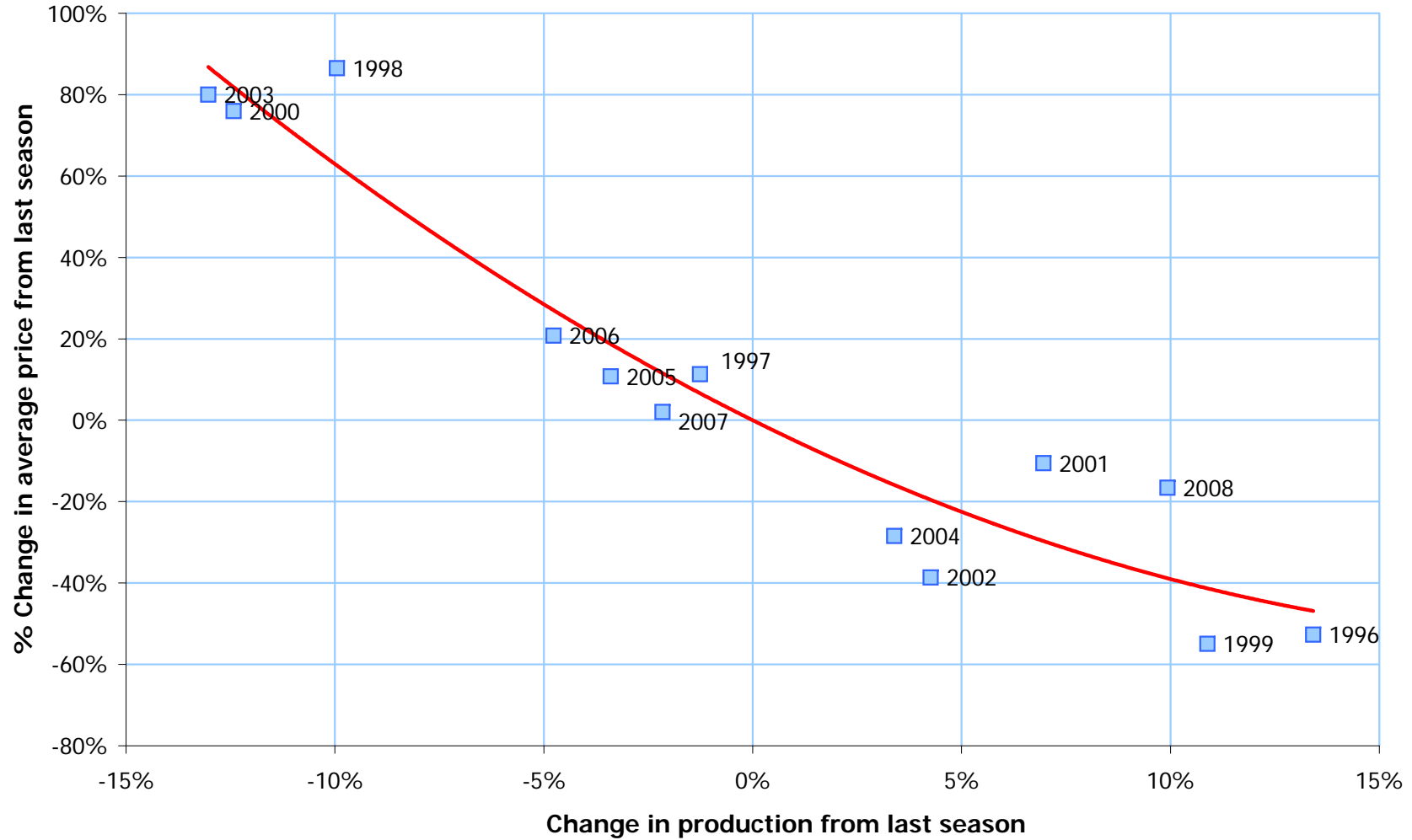


Figure 7 : Price versus change in planted area next season

*The average price in a season influences average planting intentions for the next season, and tends to lead to predictable changes in planted area.
High prices lead to increased areas, and low prices to lower areas.*

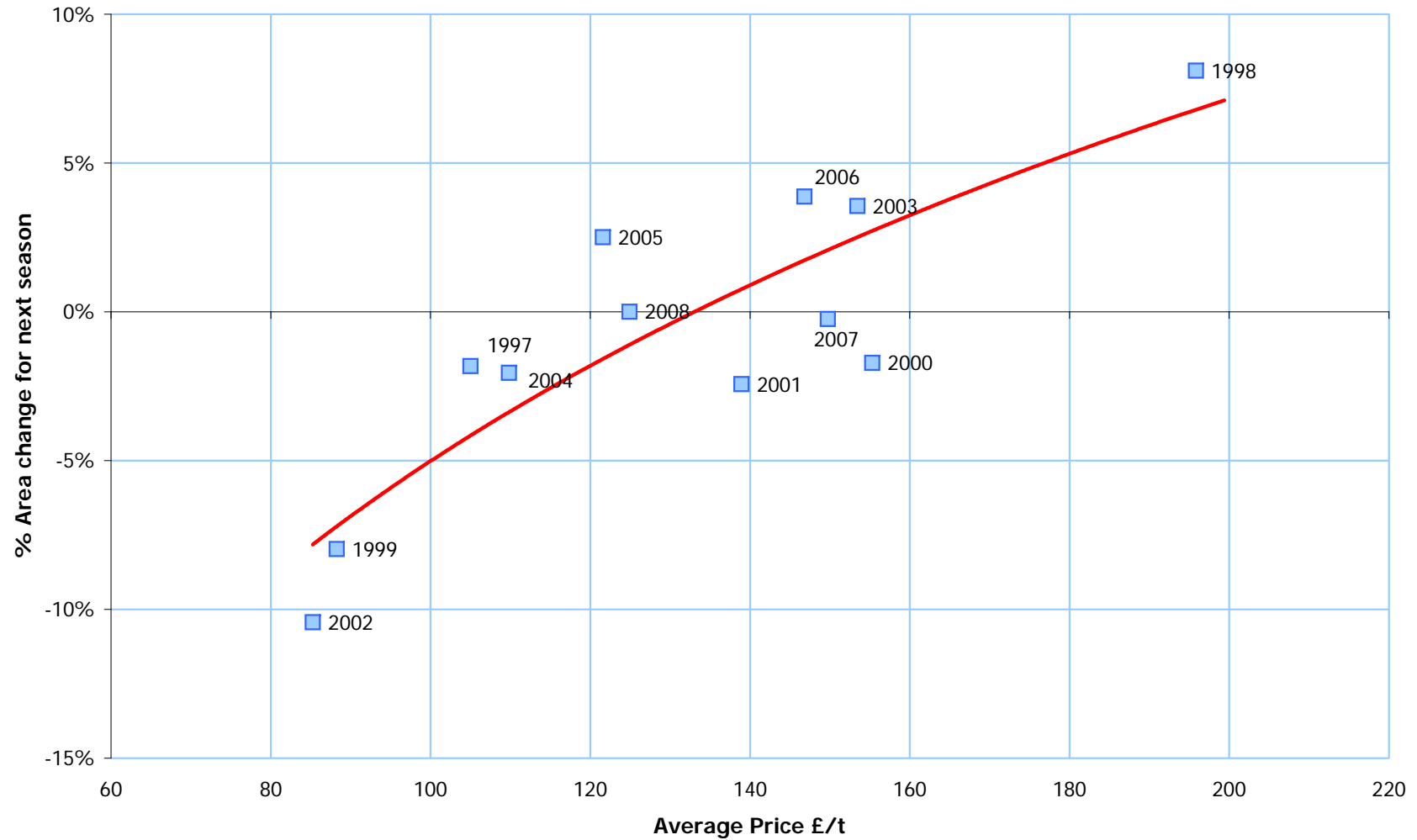


Figure 8 : Free Market Weekly Average Price Index 2000-2008

Each season has its own unique factors, especially relative to continental prices and imports, but high and low price seasons follow distinctive patterns.

